

HPE Storage from Evolving Solutions

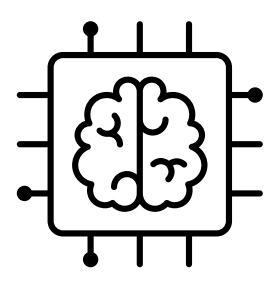


Edge-to-core portfolio designed to deliver the cloud experience wherever data lives.

Compared to server storage, Alletra is more dense, more highly available, more redundant, and better performing.

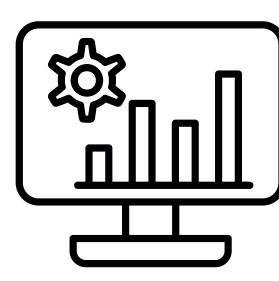
AI-driven

Predict and prevent disruptions across storage, services, and virtual machines.



As-a-service

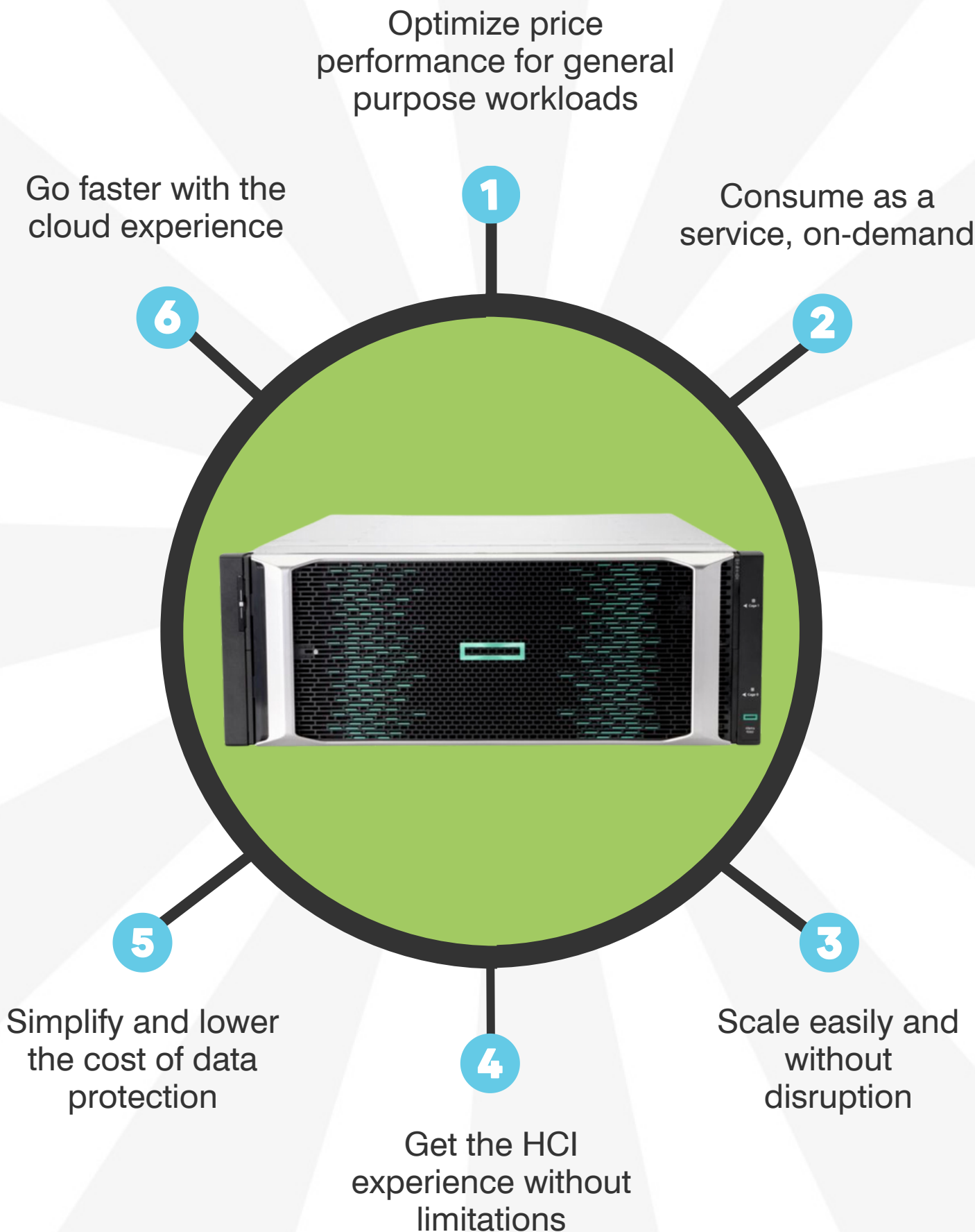
Consume data infrastructure as a service via HPE Greenlake, with a pay-per-use model.



Built for Cloud

Setup in minutes because systems are automatically discovered, onboarded, and configured.

Six reasons to choose HPE Alletra Storage from Evolving Solutions:



HPE Alletra Storage comes bundled with HPE InfoSight, which automates management, analytics, and monitoring to minimize human touch points.

By monitoring performance within your data center, InfoSight can identify an issue, such as a drive that's about to fail.

86%

of issues automatically predicted and resolved¹

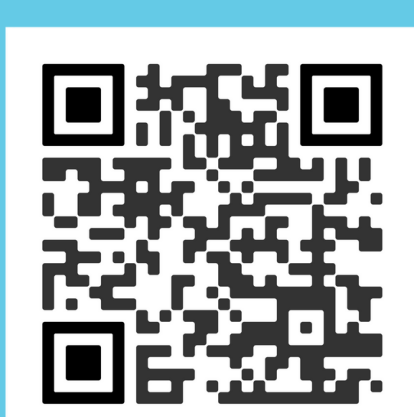
85%

less time managing problems²

54%

of problems resolved are beyond storage³

It will automatically create a service ticket and ship a drive directly to you or send an HPE technician out to install it.



Watch our video on how your organization can reduce administration and improve performance with HPE Storage.